

Other AdDent Products



◀ **CALSET™**
Composite Warmer
and Anesthetic tray

TRIMAX™ ▶
Composite
Instrument



◀ **RITE-LITE™**
Shade Matching light

MICROLUX/DL™ Kit ▶
with 6 bottles of
solution



Microlux Transilluminator kit: Includes light, glass light guide, batteries & clip	P/N 110019
Microlux Fiber Optic Mirror Kit: Includes light, mirror batteries & clip	P/N 110045
Microlux with 2mm tip	P/N 110026
Fiber optic 3mm glass light guide	P/N 630003
Fiber optic 2mm glass light guide	P/N 600045
Fiber optic mirror only	P/N 640014
Set of 3 "N" size batteries	P/N 630006
L.E.D.	P/N 630013
Transilluminator Protective Sleeves	P/N 600027

References: Friedman, J., Marcus, MJ: Transillumination of the Oral Cavity with use of Fiber Optics, J.A.D.A. 80: 801-809, April 1970.
• Cortes, DF., Ekstrand, KR. et al: An in Vitro Comparison of the Ability of Fiber Optic Transillumination. Visual Inspection and Radiographs to Detect Occlusal Caries and Evaluate Lesion Depth, Caries Research 2000 34: 443-447. • Davies, GM., Worthington, HV., et al: British Dental Journal 191: 145-147, August 2001.

AdDent, Inc.
43 Miry Brook Road • Danbury, CT 06810
203-778-0200 • www.addent.com

MICROLUX™

TRANSILLUMINATOR



High output L.E.D. improves the visualization of caries and cracks.



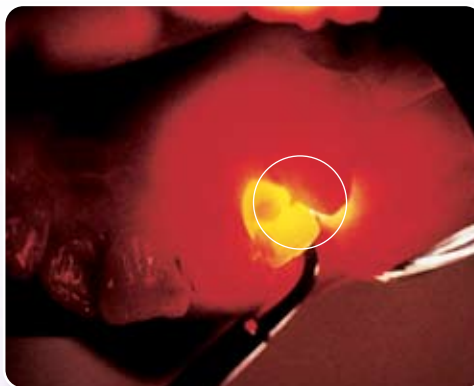
Fiber Optic Mirror provides additional light for hard to reach areas. Front surface mirror designed for clearer vision.





1a

Anterior Caries: Clinical



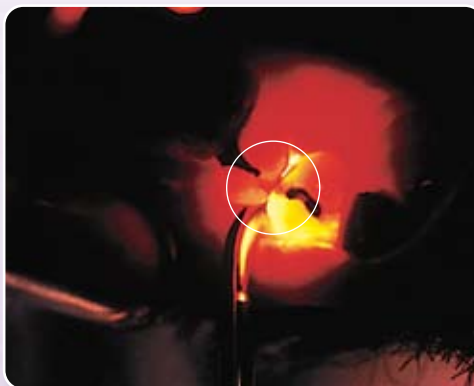
1b

**Anterior Caries:
Transillumination Technique**



2a

Posterior Caries: Clinical



2b

**Posterior Caries:
Transillumination Technique**

Transillumination helps to visualize:

Crown Fractures, Caries, and Root Canal Orifice.

Transillumination Technique:

To help visualize anterior caries, place the probe on the labio-cervical region of the tooth and examine from the lingual with a mouth mirror, as shown in figure 1b.

To help visualize posterior proximal caries, place the probe on the bucco-cervical area of the tooth. Light passes into the cervical region and then radiates occlusally. Caries may appear as a dark triangular or rectangular shadow on the occlusal as shown in figure 2b.

Features:

- Focused Glass Light Guide
- High Output L.E.D.
- Battery Operated
- Demonstrates Oral Conditions in Graphic Terms
- Light Guide & Mirror are Autoclaveable
- Protective Sleeves are available
- Portable and easy to use



Also available with 2mm glass light guide which allows doctors to better help visualize caries on posterior teeth. Microlux with 2mm tip P/N 110026.

Benefits:

- Intense spot of light
- 30,000 hour L.E.D. Life
- 20-30 hour battery life
- Useful with children, pregnant patients, or anyone with strong gag reflex
- Ideal for hygienist initial exam
- Assists in patient education